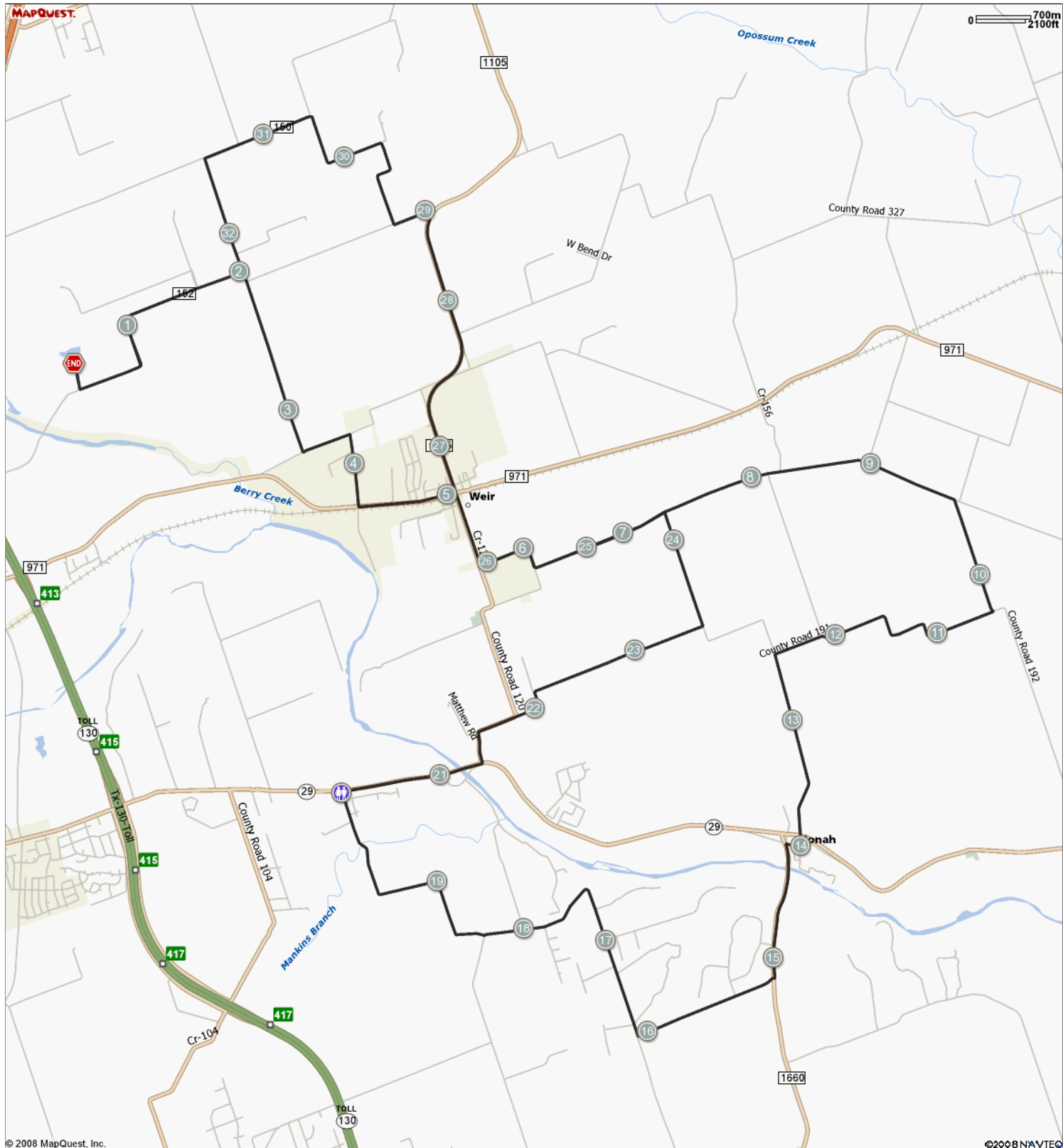


ROUTE DESCRIPTION:  
No Description Provided



**ROUTE DESCRIPTION:**  
 No Description Provided

Notes		
AT	FOR	NOTES
0.24 mi.		9,704 ft. Turn left at Highway 152
2.07 mi.		7,342 ft. Turn right at Highway 140
3.46 mi.		2,058 ft. Turn left at Highway 194
3.85 mi.		2,814 ft. Turn right at N Towns Mill Rd
4.39 mi.		4,086 ft. Turn left at 971
5.16 mi.		2,958 ft. Turn right at Highway 120
5.72 mi.		2,852 ft. Turn left at Highway 124
6.26 mi.		70 ft. Slight left to stay on Highway 124
6.27 mi.		18,305 ft. Turn left to stay on Highway 124
9.74 mi.		4,575 ft. Turn right at Highway 192
10.61 mi.		8,281 ft. Turn right at Highway 127
12.18 mi.		2,090 ft. Slight left at Highway 191
12.57 mi.		7,206 ft. Turn left at Highway 126
13.94 mi.		315 ft. Continue on Old State Highway 29 E
14 mi.		834 ft. Turn right to stay on Old State Highway 29 E
14.15 mi.		5,240 ft. Turn left at 1660
15.15 mi.		6,109 ft. Turn right at Highway 131
16.3 mi.		9,301 ft. Turn right at County Road 130
18.07 mi.		1,572 ft. Slight left at Highway 100

Notes		
AT	FOR	NOTES
18.36 mi.		10,025 ft. Continue on Highway 106
20.26 mi.		163 ft. Bathroom
20.29 mi.		5,946 ft. Turn right at TX-29
21.42 mi.		2,827 ft. Turn left at Highway 120
21.95 mi.		9,074 ft. Slight right at Highway 121
23.67 mi.		4,620 ft. Turn left at Highway 126
24.55 mi.		5,735 ft. Turn left at Highway 124
25.63 mi.		2,924 ft. Turn right to stay on Highway 124
26.19 mi.		2,958 ft. Turn right at Highway 120
26.75 mi.		3,189 ft. Continue on 1105
27.35 mi.		8,448 ft. Slight right to stay on 1105
28.95 mi.		1,731 ft. Turn left at Highway 149
29.28 mi.		7,870 ft. Turn right at Highway 148
30.77 mi.		69 ft. Turn left to stay on Highway 148
30.78 mi.		4,657 ft. Slight left at Highway 150
31.67 mi.		4,622 ft. Turn left at Highway 140
32.54 mi.		9,705 ft. Turn right at Highway 152
34.38 mi.		950 ft. Turn right
34.56 mi.		- Stop